



e-globe
solutions

think smart – work digital

company presentation



facts and figures

headquarter:	Schwarztorstrasse 11, CH-3007 Bern
branch office:	via Lisano 3, CH-6900 Massagno-Lugano
foundation:	22.09.2014
share capital:	CHF 370'000.00
employees:	22
products:	godoo, TIM Billing, ALEX, NETadmin Connectors



e-globe solutions SA

we are a software house!
we support our customers in their efforts to
digitalise and automate their work processes.



e-globe solutions - Structure

products

godoo
TIM
ALEX

solutions

taylor-made
solutions &
integrations

services

professional services



in short ...

- we offer software products to digitalise work processes
- we develop tailor-made software solutions together with our customers
- we automate and integrate software solutions in complex system environments



e-globe
solutions



find out more about our product
godoo



do you need to digitalise & standardise
your field force processes? ...

consider it done ...
... we deliver godoo!



field force management
digitalisation
automation

godoo is a field-force management product which digitalises the work of field force staff. It integrates easily with existing back-end systems but may also be used as standalone solution for field-force processes.

godoo offers the users to work with a webApp (for dispatchers and backoffice employees) as well as a mobileApp (for field force staff).

all workflows can be configured according to the specific needs of the customer.



field force management
digitalisation
automation

- ... manages complex workflows in various environments
- ... offers flexible interfaces in order to interact with backend systems
- ... offers a solid BPMN-platform to configure workflows
- ... has a user-friendly web- and mobileApp graphical user interface
- ... ensures continuity between webApp and mobileApp
- ... based on state-of-the-art-technologies and a convincing ROI

in short:

godoo is efficient and helps digitalize work processes!



e-globe
solutions



find out more about
ALEX



do you intend to build a fiber network? ...

... we know the challenges!



ALEX

ALEX:
development
integration
operations

- in switzerland ALEX* is the central platform to provision wholesale services onto fiber networks. ALEX connects non-discriminating telecom service providers with fiber network providers to execute their provisioning- and business processes. ALEX provides standardised interfaces which enable service providers to execute the necessary connection- and ticketing processes. the ALEX platform originated from an initiative of 5 public utility companies.
- e-globe solutions was responsible for the concept and development of the ALEX platform and operates the platform since its operational start. furthermore, e-globe solutions is integration partner to telecom service providers as well as network service providers.

* ALEX Platform = Active Line EXchange



e-globe
solutions



find out more about
flight



you need to automise
fiber provisioning? ...

... we deliver automated
provisioning and autodiscovery!



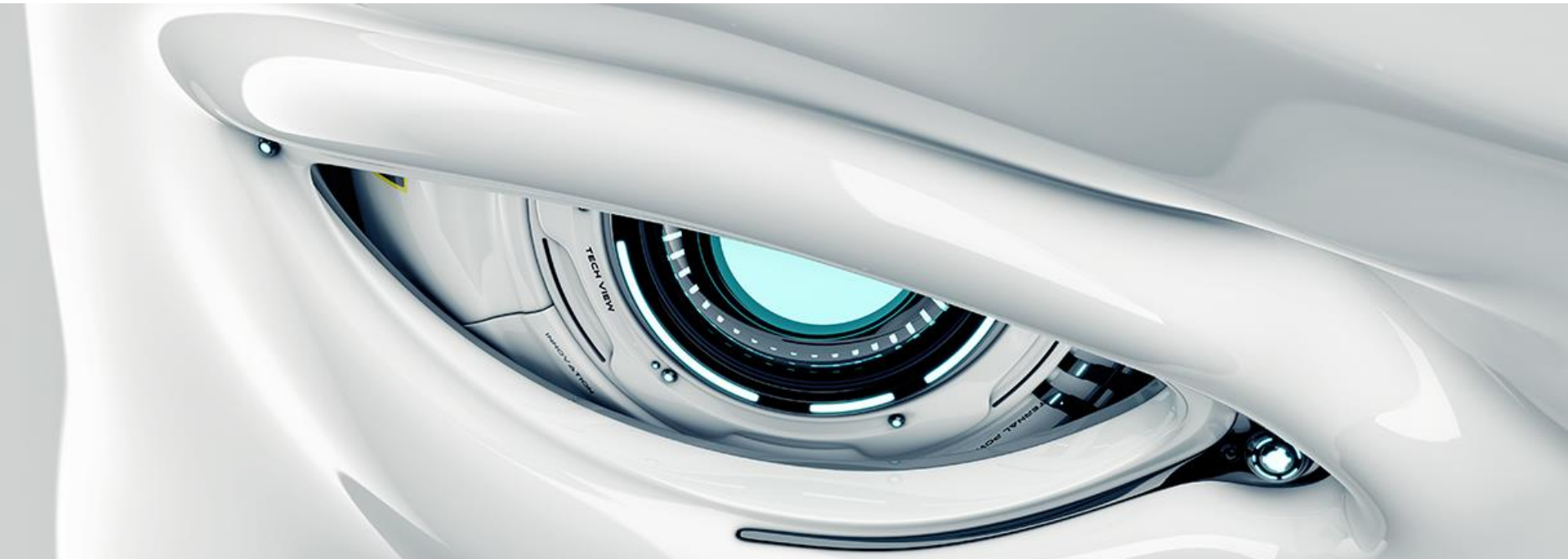
flight (OSS/BSS)

product:
development
integration
operations

- e-globe solutions is an integrator for various OSS/BSS systems and has sound experience in integrating into complex environments
- should one of our customers not yet have an OSS/BSS system or not use one of our partners systems (NETAdmin or flow by Maintrac), we also offer our own OSS/BSS system called “flight” (fiber light)..
- flight provides a standard integration into the field force management tool *godoo* of e-globe solutions.



e-globe
solutions



find out more about our product

TIM



you need complex tariffing and
real time training? ...

... TIM will get the job done for you!



TIM product suite

The TIM* *Product Suite* is a collection of software components to realise and support business processes in the telecommunication market. TIM consists of the following components:

- TIM Billing
- TIM Prepaid
- TIM Value Added Services Billing

TIM operates as retail & wholesale billing system.

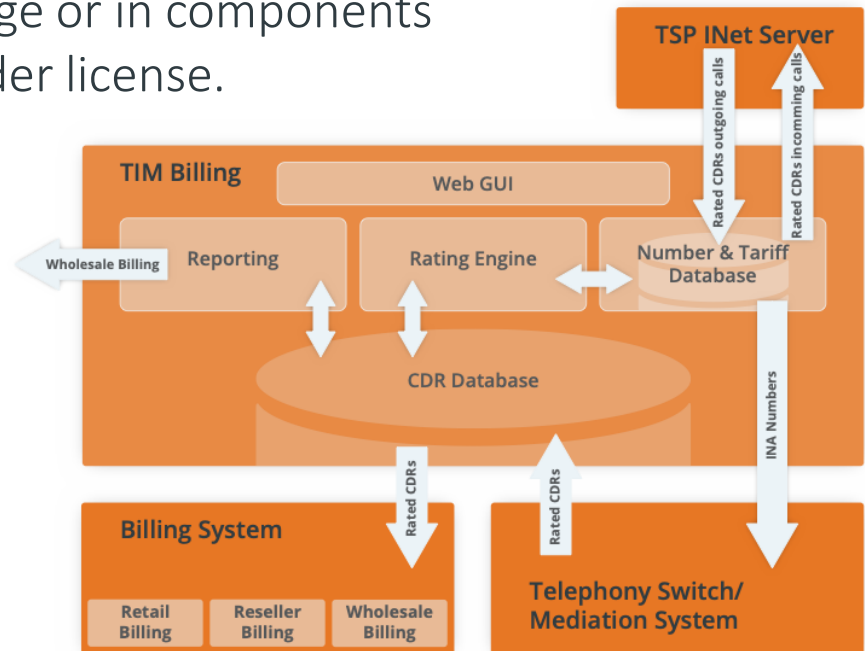
for more information about these products, please do contact us!

* TIM: Telecommunication Industry Manager



TIM billing

- TIM billing is a mature and in-house developed rating- and billing solution to produce virtually any tariff scenario. starting from inclusive-volumes via customer options and routing dependencies up to time- and event-based tariffs – nothing is impossible.
- we offer TIM billing as total package or in components as well as hosted services and under license. find out more.





e-globe
solutions



find out more about our
service portfolio



your needs ...

... are our daily business!



professional services

our IT-consulting services include

- impartial and vendor-neutral consulting
- project management
- business analysis
- feasibility studies
- analysis, design and specification
- test: planning, management and execution
- training services

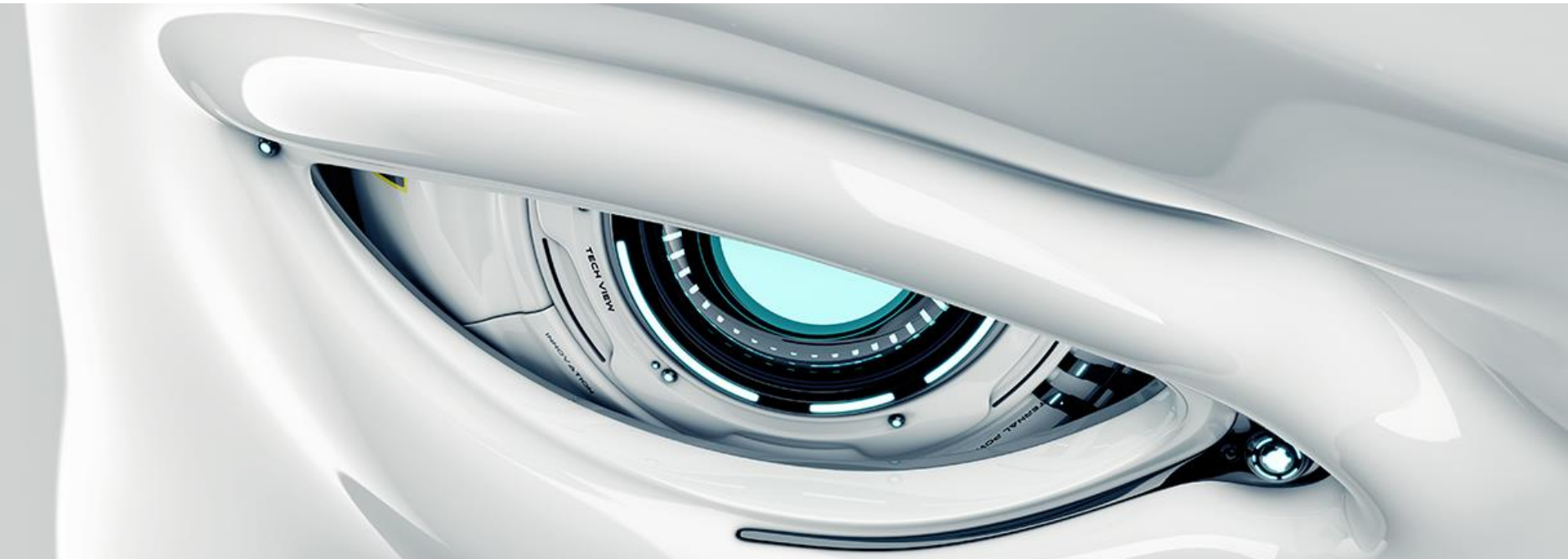


operations

- e-globe solutions offers operating services and application management of own as well as of third-party solutions & products in the realm of expertise. We offer configuration management, system administration, help-desk functionalities for technical or business issues, operations support, and incident management. We host the applications of our customers in our own data-center or manage them remotely.
- we offer availability during normal business hours up to 24/7, depending on the needs of our customers.



e-globe
solutions



these are our
references



references





e-globe
solutions

think smart – work digital

thank you very much
for your attention

Headquarter

e-globe solutions SA
Schwarztorstr. 11
CH-3007 Bern

☎: +41 31 372 04 14

Branch Office

e-globe solutions SA
via Lisano 3
CH-6900 Massagno-Lugano

☎: +41 31 372 04 15

info@e-globe-solutions.com

www.e-globe-solutions.com

www.godoo.ch



e-globe
solutions



BACK UP



e-globe
solutions



find out more about
NETadmin



you need to automise
fiber provisioning? ...

... we deliver automated
provisioning and autodiscovery!



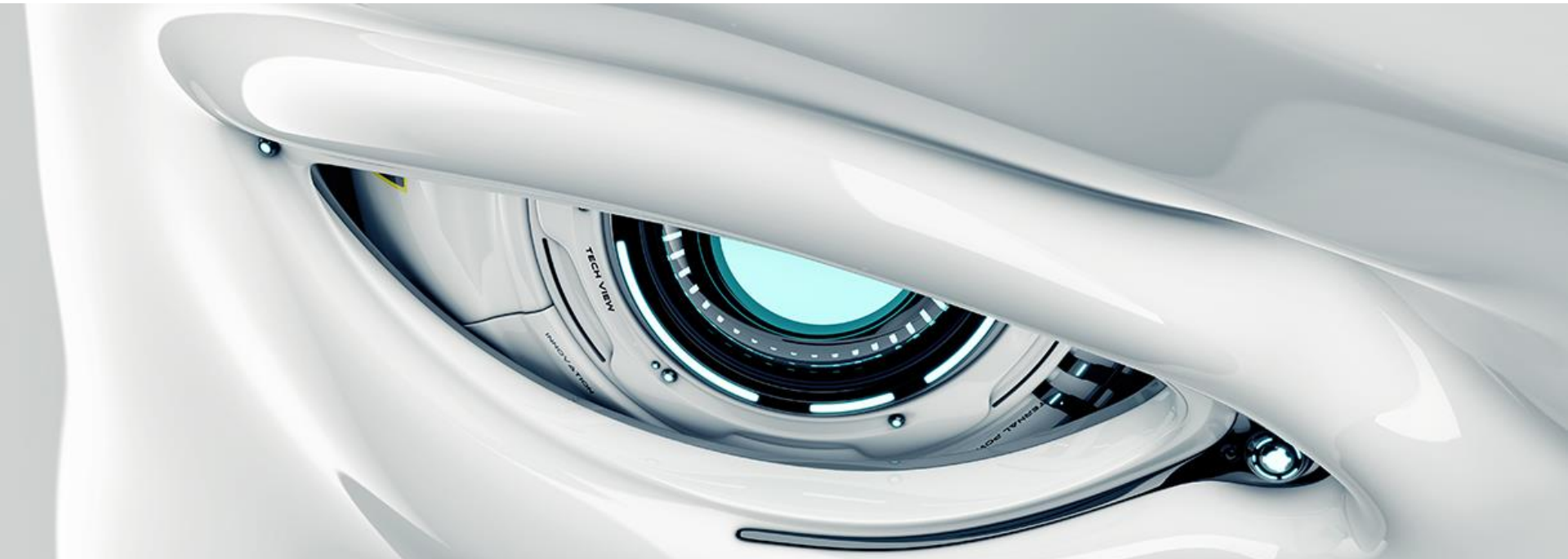
NETAdmin

NETAdmin:
development
integration
operations

- as certified partners of NETAdmin Systems e-globe solutions' staff has sound experience in the development and operation of NETAdmin solutions in production environments.
- apart from the standard functionality of NETAdmin, e-globe solutions offers a wide range of additional modules and products in operations support (OSS/BSS) that were developed based on NETAdmin, such as CRM-integration modules and process integration of external platforms.
- special modules in NETAdmin for layer 1-inventory, auto-provisioning, field force management, complex rating and billing are also available.



e-globe
solutions



find out more about
flow



you need to monitor
equipment & services? ...

... we establish synopsis
at a glance!



Flow by Maintrac

Maintrac:
development
integration
operations

- as partners of Maintrac, e-globe solutions has sound experience of Maintrac's OSS/BSS system Flow.
- apart from the standard functionality of flow, e-globe solutions offers a wide range of additional modules in operations support (OSS/BSS) to the customers that were developed based on Flow.
- low provides a standard integration into the field force management tool *godoo* of e-globe solutions.